

3M Science.
Applied to Life.™

NEW!

Scotch-Brite™
Deburr & Finish PRO
Unitized Discs
and Wheels

Finish like a PRO



From finishing and blending to light deburring, these smooth-running wheels can help you get the job done faster!

Scotch-Brite™



Versatile performance from factory to field

Scotch-Brite™ Deburr & Finish PRO Unitized Wheels are ideal for both OEM use and for maintenance operations. They are soft, to reduce defects, yet wear like iron, for fewer wheel changeouts. These hard-working, high-performance products quickly blast through dirt, corrosion and other contaminants without loading and without changing part geometry – helping you get the job done faster.

Faster, more consistent performance compared to the leading competitive wheel!

- 30 to 50% faster burr removal
- Up to 3× longer wheel life in deburring applications
- Minimal dust and debris – less dust equals less cleanup
- Improved operator “feel”
- Minimizes overcutting – results in fewer rejects

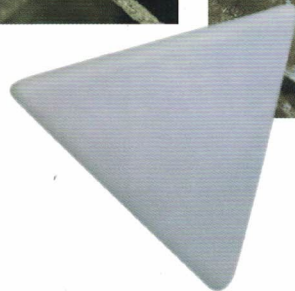
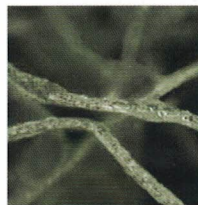
Ready for Anything



The Science of 3M Precision-Shaped Grain

Traditional non-woven abrasive products are constructed from particles of irregular-shaped abrasive materials, such as aluminum oxide, bound to a nylon web.

In our new Scotch-Brite™ Deburr & Finish PRO Unitized Wheels, conventional abrasive particles have been replaced with our proprietary ceramic precision-shaped grain. The hardness of the ceramic material, combined with the self-sharpening grain, provides longer life and helps you get the job done faster – without sacrificing the smooth feel and control you expect from Scotch-Brite abrasives.



Applications

Automotive

Machined gears, other components
Mild steel, hardened steel

Aerospace

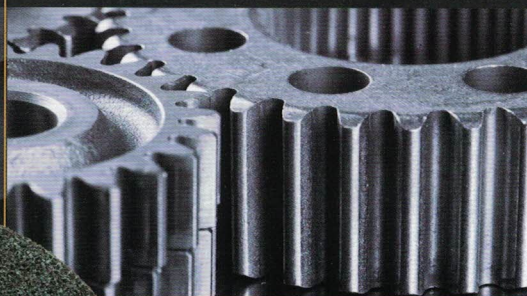
Rotors, shrouds, buckets, ducting
Titanium, aluminum alloys

Metal Fabrication

Various machined parts
Mild steel, stainless steel

Oil & Gas

Threaded pipes and
other tubular goods



**Try Scotch-Brite
Deburr & Finish
PRO – and see
the performance
advantages for yourself!**

Comparing cost-of-ownership

These are typical real-world results that customers have obtained using Scotch-Brite Deburr & Finish PRO wheels compared to traditional deburring wheels.

Contact your local 3M representative to see how new Scotch-Brite Deburr & Finish PRO wheels can help you improve productivity!

| | Traditional Deburring Wheel | NEW Scotch-Brite Deburr & Finish PRO |
|--------------------------|--------------------------------|---|
| Parts Per Wheel | | |
| Labor per piece | 00:50 seconds | 00:38 seconds |
| Reject Rate | | |
| Operator Feel | | |
| Customer Productivity | \$\$ | \$\$\$\$\$\$ |

Do you use flap brushes, cartridge rolls or other specialty abrasives in your process? You may be able to improve performance and productivity by switching to Scotch-Brite Deburr & Finish PRO wheels!

Potential advantages:

- Longer life
- Faster burr removal
- Smoother feel
- Less dusting & debris
- Better finish

Scotch-Brite™ Roloc™ TR Deburr & Finish PRO Unitized Wheel

| UPC | Size (inches) (diameter × thickness × center hole) | Max RPM | Density | Grade | Qty/ Case |
|----------------|---|------------|---------|-------|--------------|
| 076308-77115-7 | 2 × 1/4 × NH | 22,100 | 4C | MED+ | 60 |
| 048011-65081-4 | 2 × 1/8 × NH | 22,100 | 6C | MED+ | 120 |
| 048011-65082-1 | 2 × 1/4 × NH | 22,100 | 6C | MED+ | 60 |
| 076308-77116-4 | 3 × 1/4 × NH | 15,100 | 4C | MED+ | 40 |
| 048011-65084-5 | 3 × 1/8 × NH | 15,100 | 6C | MED+ | 40 |
| 048011-65083-8 | 3 × 1/4 × NH | 15,100 | 6C | MED+ | 40 |

Scotch-Brite™ Deburr & Finish PRO Unitized Disc

| UPC | Size (inches) (diameter × center hole) | Max RPM | Density | Grade | Qty/ Case |
|----------------|---|------------|---------|-------|--------------|
| 076308-77122-5 | 4 1/2 × 7/8 | 12,100 | 6C | MED+ | 5 |

Scotch-Brite™ Deburr & Finish PRO Unitized Wheel

| UPC | Size (inches) (diameter × thickness × center hole) | Max RPM | Density | Grade | Qty/ Case |
|----------------|---|------------|---------|-------|--------------|
| 048011-65017-3 | 1 × 1 × 3/16 | 35,100 | 6C | MED+ | 50 |
| 048011-65057-9 | 2 × 1/8 × 1/4 | 22,100 | 6C | MED+ | 60 |
| 048011-65018-0 | 2 × 1/4 × 1/4 | 22,100 | 6C | MED+ | 60 |
| 048011-65019-7 | 2 × 1/2 × 1/4 | 22,100 | 6C | MED+ | 30 |
| 048011-65020-3 | 2 × 3/4 × 1/4 | 22,100 | 6C | MED+ | 20 |
| 048011-65058-6 | 2 × 1 × 1/4 | 22,100 | 6C | MED+ | 10 |
| 048011-65021-0 | 3 × 1/8 × 1/4 | 18,100 | 6C | MED+ | 40 |
| 076308-77111-9 | 3 × 1/4 × 1/4 | 18,100 | 4C | MED+ | 40 |
| 048011-65004-3 | 3 × 1/4 × 1/4 | 18,100 | 6C | MED+ | 40 |
| 076308-77110-2 | 3 × 1/2 × 1/4 | 18,100 | 4C | MED+ | 20 |
| 048011-65007-4 | 3 × 1/2 × 1/4 | 18,100 | 6C | MED+ | 20 |
| 048011-65022-7 | 3 × 3/4 × 1/4 | 15,100 | 6C | MED+ | 20 |
| 048011-65005-0 | 3 × 1 × 1/4 | 15,100 | 6C | MED+ | 10 |
| 076308-77103-4 | 4 × 1 × 1/4 | 12,100 | 6C | MED+ | 5 |

Typical use: on backstand or bench motor

| | | | | | |
|----------------|---------------|-------|----|------|----|
| 048011-65078-4 | 5 × 1/4 × 1/4 | 9,000 | 6C | MED+ | 10 |
| 048011-65079-1 | 5 × 1/2 × 1/4 | 9,000 | 6C | MED+ | 5 |
| 076308-77109-6 | 6 × 1/8 × 1 | 7,500 | 6C | MED+ | 16 |
| 076308-77108-9 | 6 × 1/4 × 1 | 7,500 | 6C | MED+ | 8 |
| 048011-65074-6 | 6 × 1/2 × 1/2 | 7,500 | 6C | MED+ | 4 |
| 048011-65076-0 | 6 × 1/2 × 1 | 7,500 | 6C | MED+ | 4 |
| 048011-65097-5 | 6 × 1 × 1/2 | 7,500 | 6C | MED+ | 2 |
| 048011-65075-3 | 6 × 1 × 1 | 7,500 | 6C | MED+ | 2 |

Made-to-order sizes

| | | | |
|----------------|--|----|------|
| 076308-77119-5 | Available in sizes up to 14" diameter. | 4C | MED+ |
| 076308-77101-0 | | 6C | MED+ |

3M™ Tools and Accessories for use with Roloc™ Wheels

| UPC | Product Description | Max RPM | Qty/Case |
|----------------|-------------------------------|---------|----------|
| 051141-28329-6 | 3M™ Disc Sander, 1/2 HP, 2–3" | 12,000 | 1 |
| 051141-20231-0 | 3M™ Disc Sander, 1/2 HP, 2" | 20,000 | 1 |
| 048011-15408-4 | 3M™ Roloc™+ Holder | 25,000 | 5 |

3M™ Tools for use with 4 1/2" Unitized Discs

| UPC | Product Description | Max RPM | Qty/Case |
|----------------|-----------------------------------|---------|----------|
| 051141-28824-6 | 3M™ Grinder T27, 1 1/2 HP, 4 1/2" | 12,000 | 1 |

3M™ Tools and Accessories for use with Wheels with Center Hole

| UPC | Product Description | Max RPM | Qty/Case |
|----------------|---|---------|----------|
| 051141-28330-2 | 3M™ Die Grinder, 1/2 HP | 18,000 | 1 |
| 051141-28331-9 | 3M™ Extended Shaft Die Grinder, 1/2 HP | 18,000 | 1 |
| 048011-04018-9 | 936 unitized mandrel for 1 × 1 × 3/16" wheels | 22,200 | 5 |

► Available in 2 densities:

- 4C for finishing and blending
- 6C for deburring



Warranty, Limited Remedy, and Disclaimer: Many factors beyond 3M's control and uniquely within user's knowledge and control can affect the use and performance of a 3M product in a particular application. User is solely responsible for evaluating the 3M product and determining whether it is fit for a particular purpose and suitable for user's method of application. Unless an additional warranty is specifically stated on the applicable 3M product packaging or product literature, 3M warrants that each 3M product meets the applicable 3M product specification at the time 3M ships the product. 3M MAKES NO OTHER WARRANTIES OR CONDITIONS, EXPRESS OR IMPLIED, INCLUDING, BUT NOT LIMITED TO, ANY IMPLIED WARRANTY OR CONDITION OF MERCHANTABILITY OR FITNESS FOR A PARTICULAR PURPOSE OR ANY IMPLIED WARRANTY OR CONDITION ARISING OUT OF A COURSE OF DEALING, CUSTOM OR USAGE OF TRADE. If the 3M product does not conform to this warranty, then the sole and exclusive remedy is, at 3M's option, replacement of the 3M product or refund of the purchase price.

Limitation of Liability: Except where prohibited by law, 3M will not be liable for any loss or damage arising from the 3M product, whether direct, indirect, special, incidental or consequential, regardless of the legal theory asserted, including warranty, contract, negligence or strict liability.



Industrial Business Group 3M Thailand Limited

12th Floor, Serm-Mit Tower 159 Asoke-Montri Road,
Klongtoey Nua, Wattana, Bangkok 10110
Tel: (66) 2 260 8577 Fax: (66) 2 261 7535
www.3M.com/th | www.facebook.com/3MThailand

3M, Scotch-Brite and Roloc are trademarks of 3M Company.
Used under license by 3M subsidiaries and affiliates.